

PDA solution for Windows 7 -64 bit

Windows 7-computer

1. If the customer logs on to Windows 7 without a password you must create a 'dummy' user and password (ex. Username: xpuser - Password: xpuser).

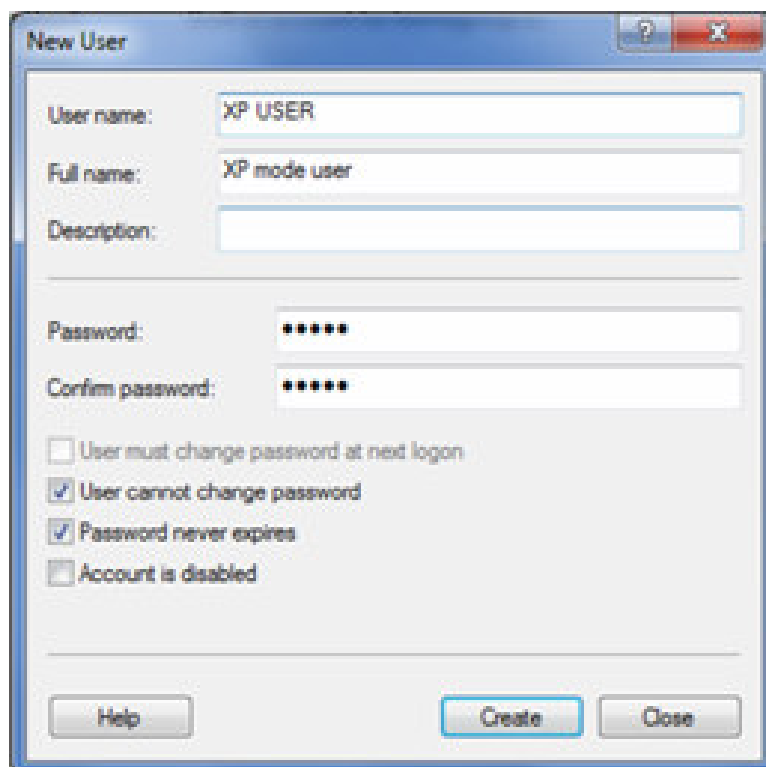
If the customer already logs on **with** a username and a password, you can go directly to item 2.

The user is used in Windows XP Mode, for creating a network drive to a shared folder in Windows 7.

- a. Write 'mmc' in the search box under Start and press 'Enter'.
- b. Click on Local Users and Groups in the left window in Microsoft Management Console.
- c. If you cannot see Local Users and Groups, it is probably because the snap-in has not been added to the Microsoft Management Console. Follow these steps to install it:

1. Click on the menu **File** in Microsoft Management Console, and then click **Add / Remove Snap-in**.
2. Click on **Local Users and Groups**, and then click **Add**.
3. Click **Local Computer**, click **Finish**, and then click **OK**.
4. Now you can do as described in item b.

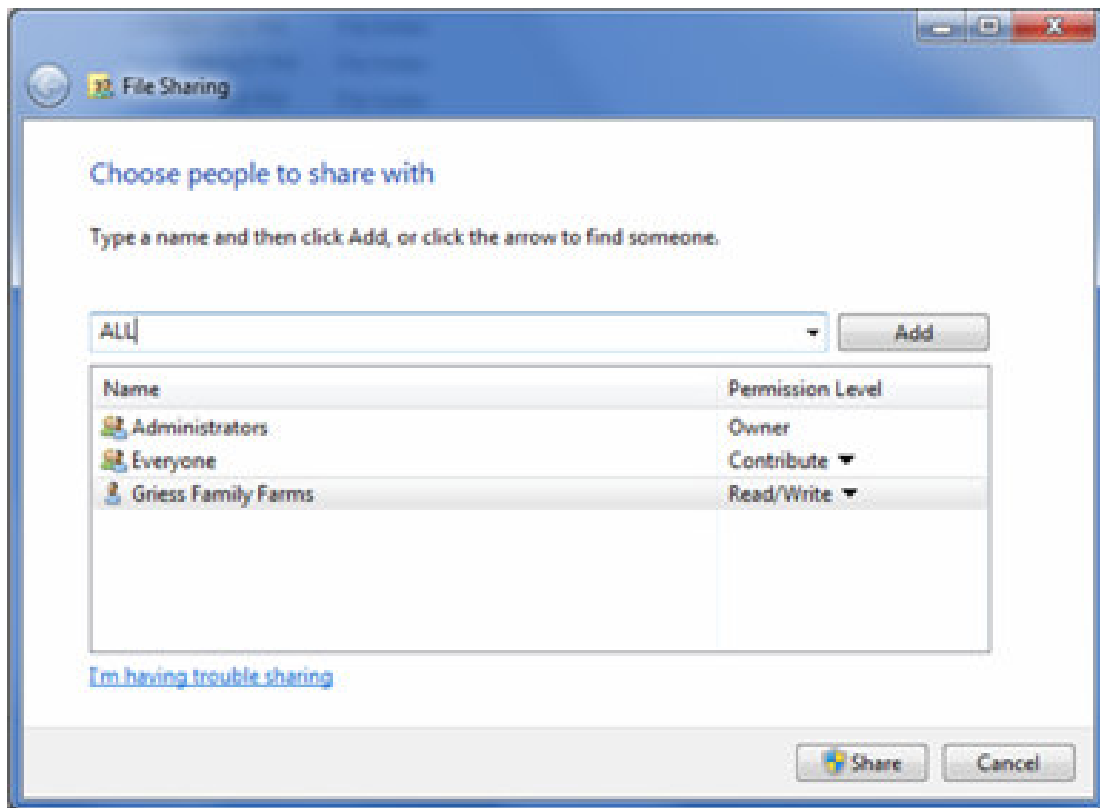
- d. Click on the folder Users.
- e. Click Action, and then click New User.
- f. Enter the relevant information in the dialog box as shown below and then click **Create**.
- g. Click on **Close** when you are finished creating the user accounts.



NOTE:

Write down the password, because you will need this later!

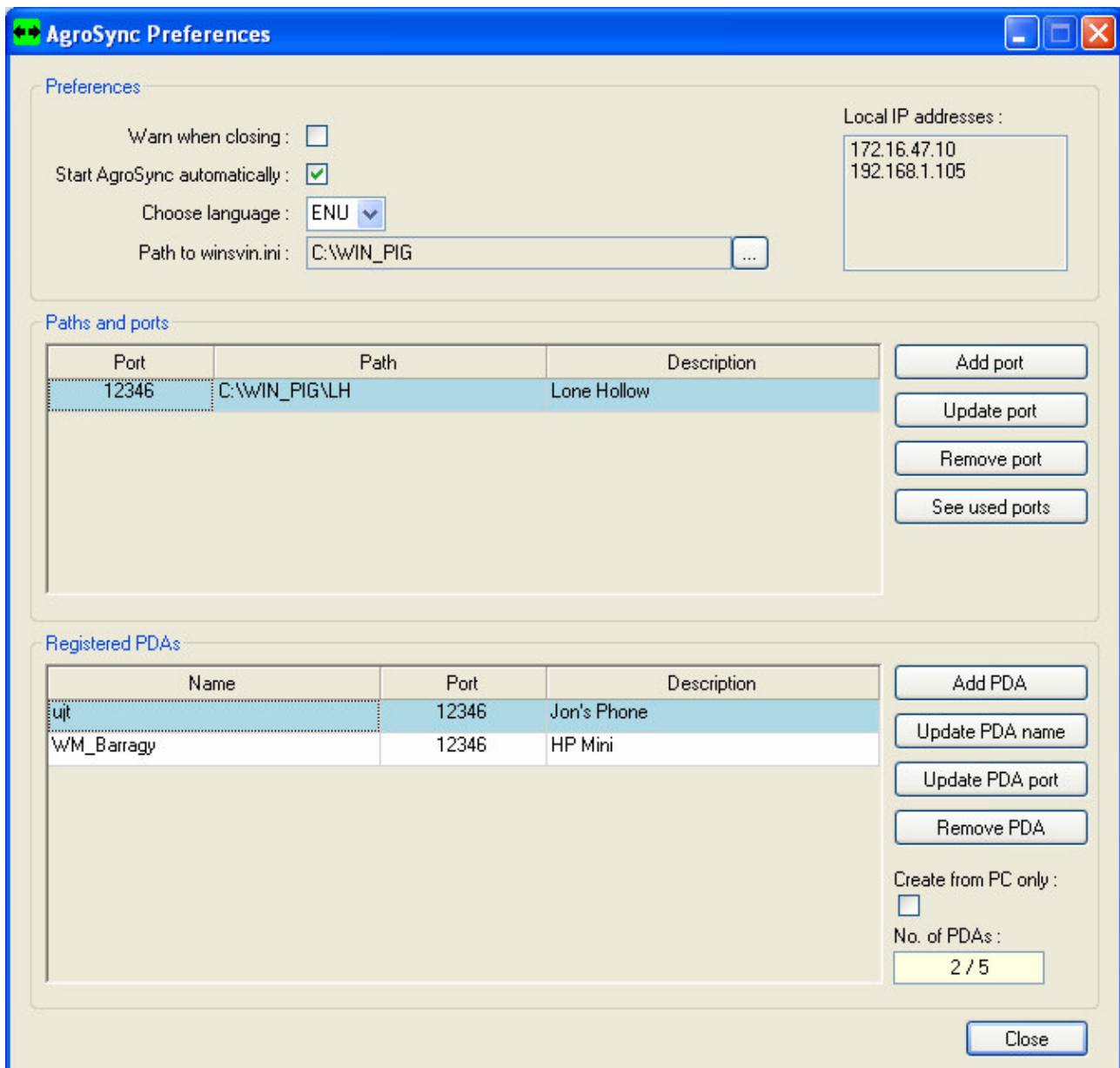
2. Create a new folder (ex. C: \ WIN_PIG).
3. Share the new folder with all: Right-click on the folder and select '**Share with**' → '**Certain persons**'. Select '**ALL**' in the dropdown box and click on the '**Share**' button



A window shows the information regarding the shared folder. Click the '**Finish**' button to close the window.

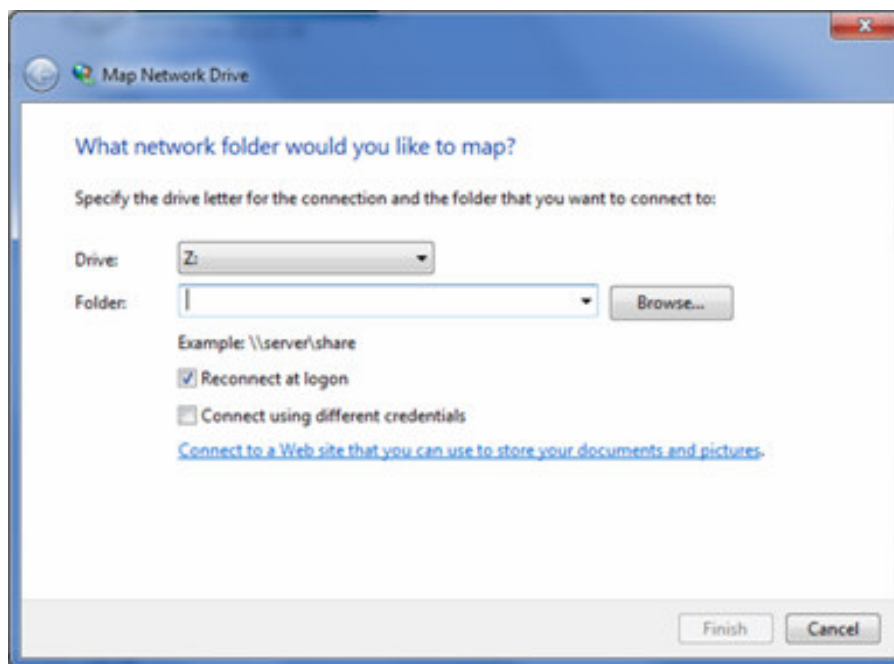
4. Create a new folder in the new shared folder and call it REG_FIL.
5. Install *AgroSync ONLY for Windows 7 – 64 bit*. For simplicity, one should choose to install AgroSync in the new shared folder.

6. Go into Settings in AgroSync and update the port so it points to the REG_FIL folder in the new shared folder on the C-drive on the Windows 7-computer.
7. Write down the IP address on the Windows 7 machine, as it is used in the setup of WinPig in the Windows XP mode. The IP address can also be seen in AgroSync's settings



Windows XP Mode-computer

1. Copy the content from the REG_FIL in WinPig on the Windows XP Mode to the new shared REG_FIL folder on Windows 7-computer. The C-drive on the Windows 7-computer is considered a network drive named 'C of [computer name]' in the explorer on the Windows XP Mode.
2. Log on to the Windows 7-computer by typing it's IP address in the address bar in the explorer on the Windows XP Mode. Write it with two backslashes in front and press 'Enter' (ex. \\192.168.1.25).
3. Use the 'dummy' user from step 1 to log in, if the user doesn't use a password when logging in.
4. Right-click on the shared folder that appears after successful login and select 'Connect to Network Drive ...'. Choose a letter to symbolize the specific drive and press 'Finish'. Now the new shared folder on Windows 7 has become a drive letter in Windows XP mode.



5. Add drive and REG_FIL folder as parameters on the WinPig shortcut on your desktop (ex. Z:\REG_FIL).
6. Since data has now been transferred to the shared folder on the Windows 7-computer, it is a VERY good idea to delete all the files in the reg_fil folder on XP mode. From now on the data can only be found in the shared folder on the Windows 7-computer, even though the program is installed on Windows XP-mode.